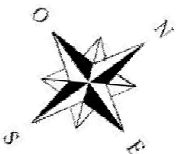
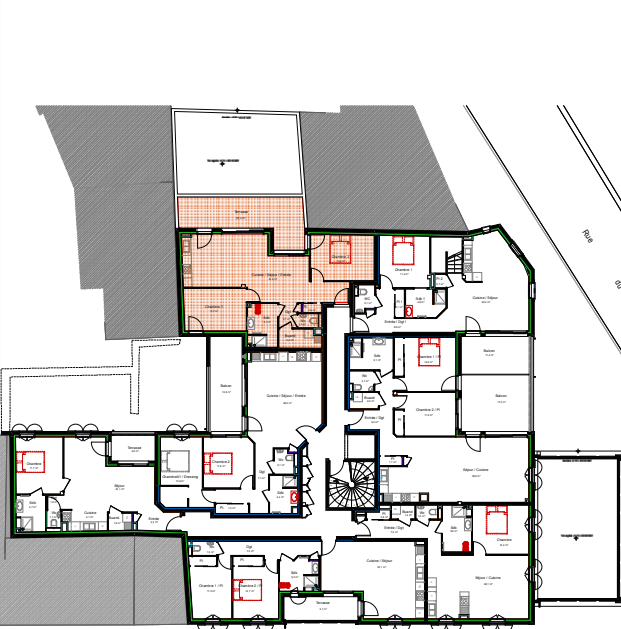
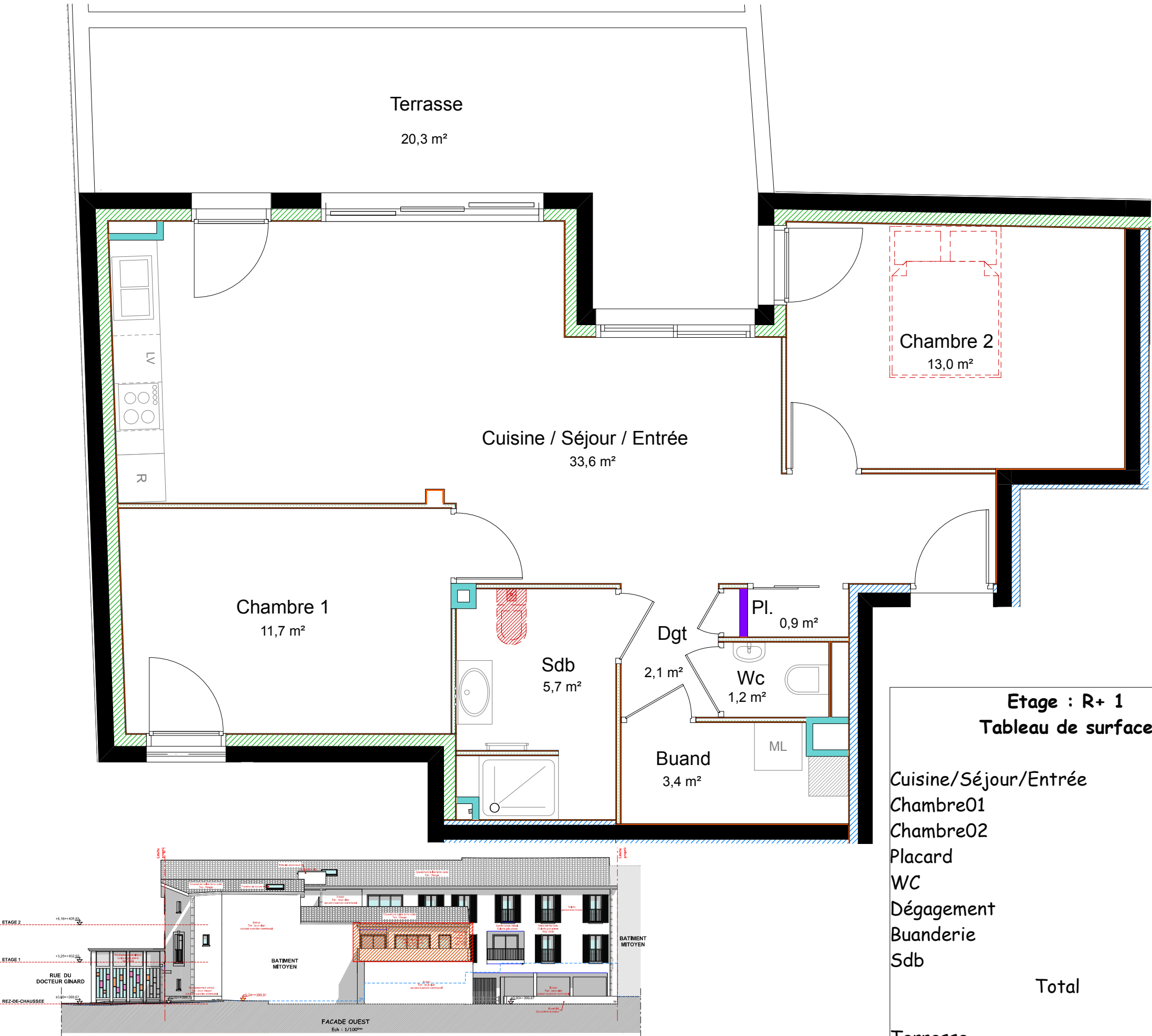


Appartement T3 - 105



VUE EN PLAN

ECH : 1/50



Etage : R+ 1 Tableau de surface	
Cuisine/Séjour/Entrée	33.6 m ²
Chambre01	11.7 m ²
Chambre02	13.0 m ²
Placard	0.9 m ²
WC	1.2 m ²
Dégagement	2.1 m ²
Buanderie	3.4 m ²
Sdb	5.7 m ²
Total	71.6 m ²
Terrasse	20.3 m ²